

YB3系列隔爆型三相异步电动机

YB3 Series Flameproof Three-phase Asynchronous Motors

概述

YB3 系列隔爆型三相异步电动机是我公司开发设计的全封闭、自扇冷、鼠笼式、隔爆型三相异步电动机。具有性能优良，使用安全可靠，振动、噪声小等特点。

本系列电动机产品执行标准 JB/T 7565.1-2011 《隔爆型三相异步电动机技术条件 第 1 部分：YB3 系列隔爆型三相异步电动机（机座号 63 ~ 355）》。

本系列电动机机座号范围为 H160 ~ H355，功率等级和安装尺寸符合 IEC 标准。

本系列电动机效率执行 GB18613-2012 《中小型三相异步电动机能效限定值及能效等级》中的能效限定值标准，效率达到国家 3 级能效，IEC60034-30 国际标准 IE2 等级，符合环保要求。

本系列电动机防爆性能符合国家标准 GB3836.1-2010 《爆炸性环境 第 1 部分：设备 通用要求》和 GB3836.2-2010 《爆炸性环境 第 2 部分：由隔爆外壳“d”保护的设备的》的规定，制成隔爆型。防爆标志为 Ex d II A T4 Gb、Ex d II B T4 Gb，适用于有爆炸性气体混合物存在的场所。

Ex d II A T4 Gb 适用于工厂用 II A 类，温度组别为 T1、T2、T3 和 T4 组爆炸性气体混合物存在的环境。

Ex d II B T4 Gb 适用于工厂用 II B 类，温度组别为 T1、T2、T3 和 T4 组爆炸性气体混合物存在的环境。

Introduction

YB3 series are totally enclosed three-phase asynchronous internal fan cooled cage flameproof motors. They feature excellent performance, high safety, high reliability, low vibration and low noise.

They comply with JB/T 7565.1-2011 Specification of Flameproof Three-Phase Asynchronous Motor Part 1: Series YB3 Flameproof Three-Phase Asynchronous Motor (Frame Size 63 to 355).

Frame sizes range from H160 to H355. Power level and mounting dimensions comply with IEC standards.

Energy efficiency complies with GB 18613-2012 Minimum Allowable Values of Energy Efficiency and Energy Efficiency Grades for Small and Medium Three-phase Asynchronous Motors and reaches Grade 3 in GB 18613-2012 or IE2 in IEC60034-30.

Flameproof performance complies with GB3836.1-2010 Explosive Atmosphere – Part 1: Equipment – General Requirements and GB3836.2-2010 Explosive Atmosphere – Part 2: Equipment Protection by Flameproof Enclosure “d”. Identified by marks including Ex d II A T4 Gb and Ex d II B T4 Gb, they are suitable for environment with explosive gas mixture.

Ex d II A T4 Gb types are suitable for II A factory environment with T1, T2, T3 or T4 class explosive gas mixture.

Ex d II B T4 Gb types are suitable for II B factory environment with T1, T2, T3 or T4 class explosive gas mixture.



电动机防爆标志代表的意义：

Example of flameproof mark:



电动机型号代表的意义：

Example of motor model:



使用条件

使用环境条件：

环境空气温度随季节变化，一般不超过 -15~+40℃。

海拔不超过 1000m。

环境空气最大相对湿度不超过 95% (当温度为 +25℃时)。

工厂具有引燃温度组别分别为 T1~T4 组的可燃性气体或蒸汽与空气形成的爆炸性混合物 1 区、2 区场所。

使用电气条件：

Application Conditions

Environment conditions:

Environmental temperature varying in different seasons: -15℃ -40℃

Elevation: usually not over 1,000m

Relative humidity of ambient air: not over 95% (temperature +25℃)

Environment: Zone 1 and Zone 2 dangerous environments with combustible gas or vapor and air mixture of T1-T4 temperature class.

Electrical conditions:

Rated frequency: 50Hz

额定频率 50Hz。

额定电压为 380V、660V、380/660V

电动机工作方式为 S1（连续工作制）。

电动机定子绕组采用 155（F）级或 180（H）级绝缘系统。

注：当电动机所使用的环境条件及电气条件不符合上述规定时，按电动机铭牌及附注标牌的规定，或者双方签技术协议按技术协议执行。

结构特点

电动机主体外壳防护等级为 IP55。

电动机定子绕组采用聚酯漆包圆铜线，定子铁心绕组经 VPI 浸漆处理，使之成为一个整体，绕组和绝缘具有良好的电气、机械、防潮性能及热稳定性，转子为鼠笼转子，采用热套工艺将铸铝转子固定在轴上，转子经校正平衡，电动机运行平稳，振动小。

电动机的基本结构及安装型式为 IMB3、IMB35、IMB5、IMV1。

电动机的冷却方式为 IC411 全封闭自扇冷式。

电动机具有一圆柱形轴伸，采用联轴器或正齿轮传动，当用正齿轮传动时，其节圆直径不得小于轴伸直径的 3 倍。

电动机接线盒位于机座顶部。接线盒内设有三个或六个接线端子，如电动机采用双进线口接线盒时，外接电缆用单口接线时，另一进线口必须用堵棒堵上，并在密封圈两侧用不小于 2mm 厚的金属垫片封口，然后用接线盒斗将其压紧在密封圈上，以保证接线盒的防爆性能。接线盒内另设一个钢质电镀螺钉，供内接地使用，接线盒出线口适用于橡胶套电缆，钢管布线。

Rated voltage: 380V, 660V, 380/660V,

Duty type: S1

Stator windings are Class F (155) or Class H (180) insulated.

Note: if actual environment or electrical condition is out of range mentioned above, the nameplate data, additional mark data or technical agreement shall prevail.

Structure Features

Protection level of main frame is IP55.

Stator winding is made of enameled round copper wire. Stator core is VPI processed and baked to achieve excellent electrical, mechanical, moisture proof and temperature rise performance. Cage rotor is assembled to shaft after it is heated. Rotor is also balanced to achieve stable operation and minor vibration.

Mounting types include IMB3, IMB35, IMB5 and IMV1.

Cooling solution is IC411 (totally enclosed self-ventilated).

Shaft is cylindrical and transmitted by coupling device or spur gear. If spur gear is selected, its pitch diameter should not be less than 3 times of shaft diameter.

Junction box is located on top of frame. There are 3 or 6 terminals. If there is any cable hole left on junction box, it must be sealed with blanking elements. Sealing ring shall be locked with metallic gasket of more than 2mm thick and pressed by cable gland so as to ensure its flameproof performance. A plated steel bolt shall be prepared inside the junction box for grounding purpose. Cable outlet on junction box is suitable for rubber cable and steel pipe wiring.



防爆要点

在进行电动机的结构设计时，充分地考虑了使用环境中的爆炸性混合物侵入电动机内部，因某种原因发生爆炸而不致引起电动机外部的爆炸性混合物爆炸的宗旨，从满足电动机外壳强度，组成外壳的各零部件间的隔爆接合面间隙或直径差、长度以及限制表面不许达到危险温度等关键条件着手来确定电动机的隔爆性能。

隔爆结构要素：组成电动机隔爆外壳的各零部件隔爆接合面及接线盒内部裸露导体之间，裸露导体与金属外壳之间的电气间隙、爬电距离：

电气间隙：10min (380/660V)

爬电距离：16min (380/660V)

电动机在规定的工作条件下额定运行时电动机允许表面温度不超过 130℃，电缆引入口温度不高于电缆的允许温度，以保证电缆运行可靠。

为了保证隔爆外壳的隔爆性能，连接用的紧固螺栓装有防松垫圈，以防止螺栓自行松脱，螺栓和不透螺孔紧固后，螺钉或螺栓尾部与螺孔的底部之间留有螺纹裕量，外壳上的不透螺孔周围的金属厚度不小螺纹外径的 1/3，但至少为 3mm。

引入电动机接线盒的电缆，在进线口处须用弹性密封圈密封，密封圈的邵尔氏硬度为 45~55°，密封圈尺寸下图表，其材料符合 GB3836.1 的 26.8，26.9 条规定的耐热耐寒试验要求。进入接线盒的电缆直径要与密封圈的孔径相符，密封圈上切有多个同心圆槽，可根据电缆直径调整密封圈孔径，当压紧接线盒斗后，应保证密封圈与电缆间和密封圈与接线盒斗间无间隙，密封圈能有效夹紧、密封电缆，否则将失去隔爆性能。

Flameproof Principle

During structure design, it has been taken into consideration that explosive mixture enters motor and leads to explosion inside but the explosive mixture outside the motor is isolated from explosion. Flameproof performance is guaranteed by its structure strength, flameproof joints between, diameter differences or length of frame parts, limited surface temperature, etc.

Flameproof elements: flameproof joints between frame parts and electric clearance and creepage distance between bare conductors and between conductors and metallic frame.

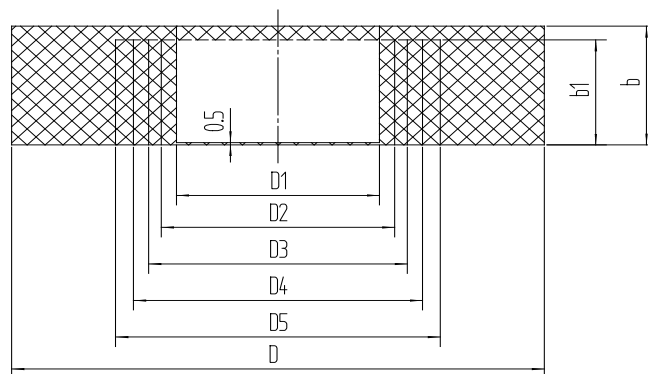
Electric clearance: 10min (380/660V)

Creepage distance: 16min (380/660V)

Under rated conditions, the surface temperature of motor should not be over 130℃, and cable inlet temperature should not be higher than max. allowable temperature of cable.

In order to guarantee the flameproof performance of frame, its bolt fasteners should be locked by lock washer. After bolt is screwed down to non-through bolt hole, excessive threads shall be left between screw or bolt end and bolt hole bottom. Thickness of frame metal around bolt hole should not be less than 1/3 of full diameter of thread and min. thickness is 3mm.

Cable into junction box must be sealed with sealing ring (Shore Hardness 45-55°). Dimensions of sealing ring are shown in the following figure, and its material complies with Article 26.8 and 26.9 in GB3836.1. Cable diameter should match with that of sealing ring. Multiple concentric holes have been cut on sealing ring, therefore it is possible to adjust sealing ring diameter according to cable diameter. When cable gland is tightened, there should be no gap between sealing ring and cable and between sealing ring and cable gland. Sealing status of sealing ring will influence the flameproof performance.



密封圈
Sealing Ring

密封圈规格及尺寸
Sealing Ring Dimensions

机座号 Frame size	进线方式 Lead-in	D1	D2	D3	D4	D5	D	b1	b
H160~180	橡胶电缆 钢管布线 Cabtyre cable Steel pipe wiring	Φ 14	Φ 20	Φ 26	Φ 30	Φ 35	Φ 58	Φ 24	Φ 26
H200~225		Φ 20	Φ 26	Φ 32	Φ 38	Φ 42	Φ 72	Φ 30	Φ 32
H250~280		Φ 25	Φ 31	Φ 36	Φ 45	Φ 50	Φ 90	Φ 36	Φ 38
H250~280									
H315~355									
H315~355		Φ 40	Φ 46	Φ 51	Φ 57	Φ 64	Φ 105	Φ 42	Φ 45

接线盒内端子套或接线板的绝缘部分，采用耐泄痕性分级为Ⅱ级的绝缘材料制成。

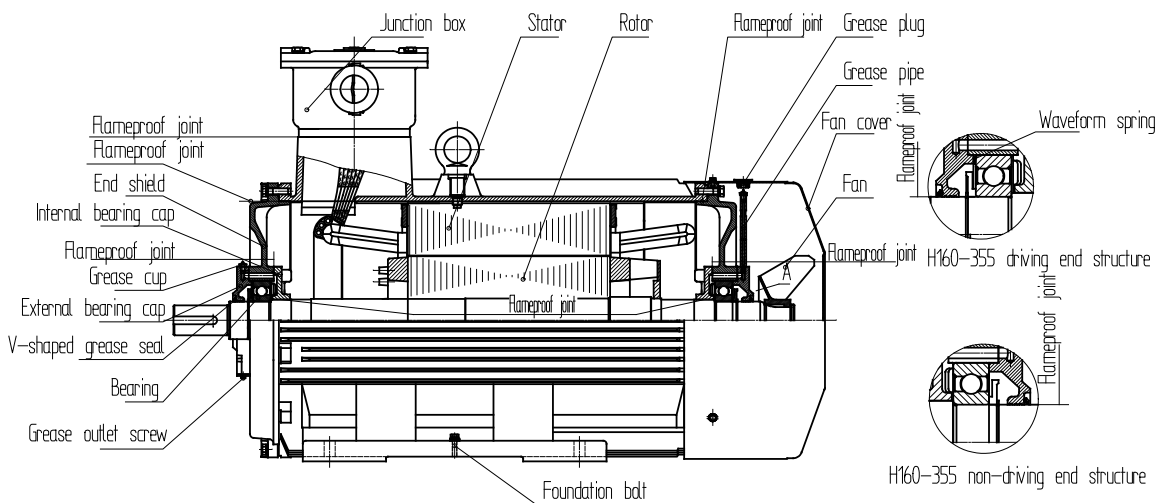
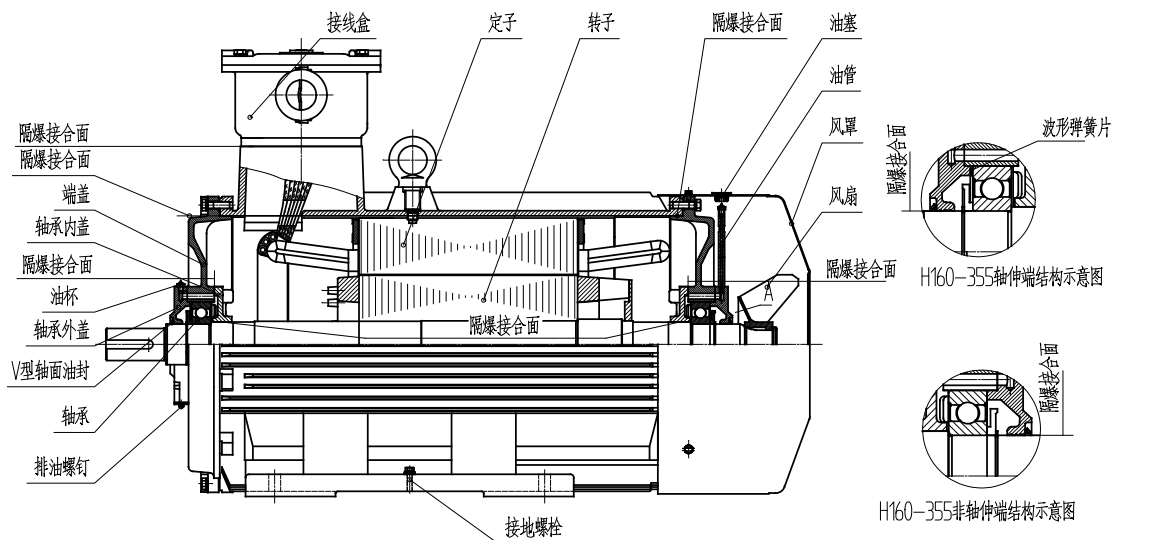
接地：电动机的接地是防止漏电火花，确保安全的重要措施。外壳上的接地端子为一钢质或铜质镀锌螺栓，设在电动机外壳的明显处，并有接地标志牌。

电动机的隔爆零件有：机座、端盖、轴、轴承内盖、接线盒座、安装板、接线盒盖、接线螺栓、端子套或接线板、密封圈。

Insulation part of wiring terminal sleeve or board is made of insulation material of Grade II resistance to tracking.

Grounding: it is an important safety measure to prevent electric leakage spark. Ground terminal on frame is steel bolt or galvanized copper bolt. It is located on prominent position and is marked by grounding sign.

Flameproof parts include frame, end shield, shaft, internal bearing cap, junction box base, mounting plate, junction box cover, wiring bolt, wiring terminal sleeve or board and sealing ring.



YB3系列电动机的机座号与转速及功率对应关系
Relation of Frame Size, Power and Speed for YB3 Series

机座号 Frame size	同步转速 Synchronous speed (r/min)					
	3000	1500	1000	750	600	
	功率 Power (kW)					
160M1	11	11	7.5	4	—	
160M2	15			5.5		
160L	18.5	15	11	7.5		
180M	22	18.5	—	—		
180L	—	22	15	11		
200L1	30	30	18.5	15		
200L2	37		22			
225S	—	37	—	18.5		
225M	45	45	30	22		
250M	55	55	37	30		
280S	75	75	45	37		
280M	90	90	55	45		
315S	110	110	75	55		45
315M	132	132	90	75		55
315L1	160	160	110	90	75	
315L2	200	200	132	110	90	
355S1	(185)	(185)	160	132	(90)	
355S2	(200)	(200)				
355M1	(220)	(220)	(185)	160	110	
355M2	250	250	200		132	
355L1	(280)	(280)	(220)	(185)	160	
355L2	315	315	250	200	(185)	

注1：带括号的为不优先推荐规格
注2：S、M、L后面的数字1、2分别代表同一机座号和转速下的不同功率。
Note 1: Models in brackets are not recommended in the first place. "1" and "2" behind S, M and L stand for different power with the same frame size and rotation speed.



YB3系列电动机空载时A计权声功率级dB (A) 噪声数值标准
Acoustic Power Level Weighed
According to A Scale dB(A) for YB3 Series at No Load

功率 Power (kW)	同步转速 Synchronous speed (r/min)				
	3000	1500	1000	750	600
4	77	65	69	68	—
5.5	80	71	69	68	
7.5	80	71	73	68	
11	86	75	73	70	
15	86	75	73	73	
18.5	86	76	76	73	
22	88	76	76	73	
30	90	79	76	75	
37	90	81	78	76	
45	92	81	80	76	
55	93	83	80	82	82
75	94	86	85	82	82
90	94	86	85	82	82
110	96	93	85	82	90
132	96	93	85	90	90
160	98	94	92	90	90
(185)	98	94	92	90	90
200	98	94	92	90	—
(220)	100	95	92	—	
250	100	95	92		
(280)	100	95	—		
315	100	95			

不同轴中心高H (mm) 用位移、速度和加速度表示的振动强度限值 (方均根值)
Limits of maximum vibration magnitude in displacement, velocity and acceleration (r.m.s.)
at different shaft height H(mm)

轴中心高 Shaft height mm	160≤H≤280			H>280		
	位移 Displacement μ m	速度 Velocity mm/s	加速度 Acceleration m/s ²	位移 Displacement μ m	速度 Velocity mm/s	加速度 Acceleration m/s ²
自由悬置 Free suspension	35	2.2	3.5	45	2.8	4.4
刚性安装 Rigid mounting	29	1.8	2.8	37	2.3	3.6

轴承型号
Bearing Type

机座号 Frame size	轴伸端 Driving end	非轴伸端 None-driving end
H160 (2P)	6209/V2	6209/V2
H160 (4~8P)	6309/V2	6209/V2
H180 (2P)	6211/V2	6211/V2
H180 (4~8P)	6311/V2	6211/V2
H200 (2P)	6212/V2	6212/V2
H200 (4~8P)	6312/V2	6212/V2
H225 (2P)	6312/V2	6312/V2
H225 (4~8P)	6313/V2	6312/V2
H250 (2P)	6313/V2	6313/V2
H250 (4~8P)	6314/V2	6313/V2
H280 (2P)	6314/C3	6314/C3
H280 (4~8P)	6317/C3	6314/C3
H315 (2P)	6316/V2	6316/V2
H315 (4~10P)	N319/C3	6319/C3
H355 (2P)	6319/Z2	6319/Z2
H355 (4~10P)	NU322	6322/Z2

YB3系列电动机性能参数
Technical Data of YB3 Series

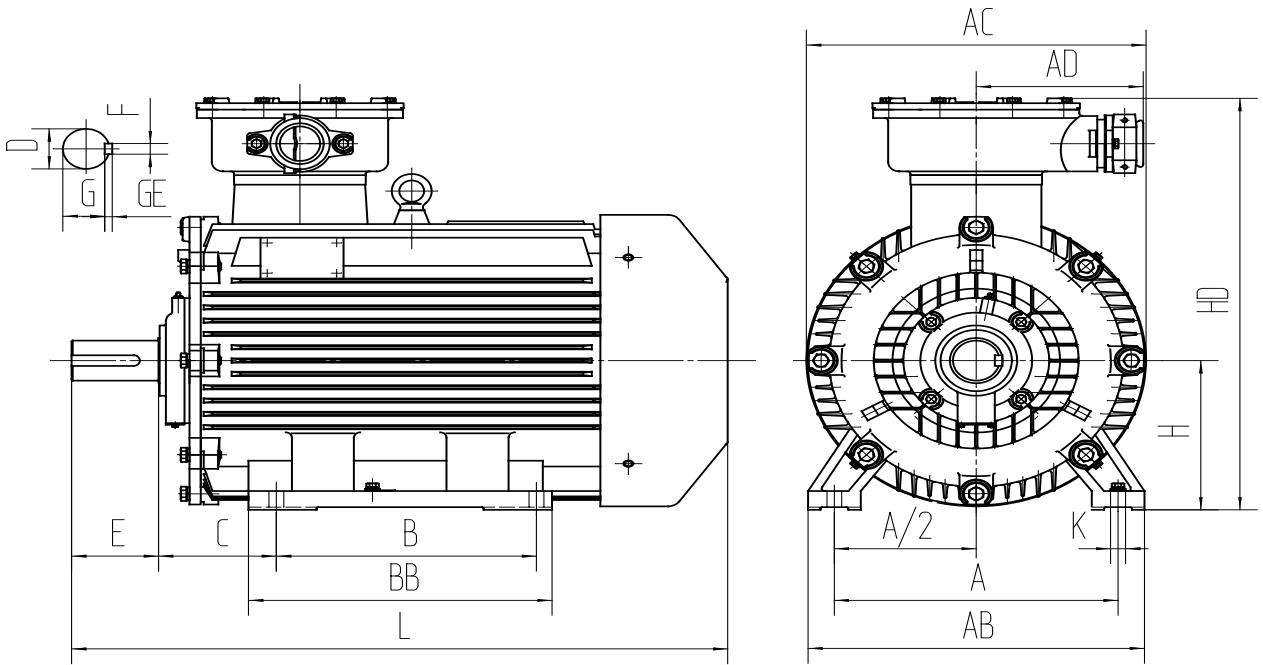
电压 Voltage: 380V 频率 Frequency: 50Hz

型号 Type	额定 功率 Rated Power	额定 电流 Rated Current	额定 转速 Rated Speed	额定 转矩 Rated Torque	效率 Efficiency	功率 因数 Power Factor	堵转电流 额定电流 $\frac{I_{st}}{I_n}$	堵转转矩 额定转矩 $\frac{T_{st}}{T_n}$	最大转矩 额定转矩 $\frac{T_{max}}{T_n}$	重量 Weight
YB3-160M1-2	11	20.7	2930	35	90.5	0.89	7.9	2.2	2.3	153
YB3-160M2-2	15	28.0	2930	48	91.3	0.89	8.0	2.2	2.3	165
YB3-160L-2	18.5	34.4	2930	60	91.8	0.89	8.1	2.2	2.3	183
YB3-180M-2	22	40.7	2940	71	92.2	0.89	8.2	2.2	2.3	240
YB3-200L1-2	30	55.1	2950	97	92.9	0.89	7.5	2.2	2.3	316
YB3-200L2-2	37	67.7	2950	119	93.3	0.89	7.5	2.2	2.3	333
YB3-225M-2	45	82.0	2970	144	93.7	0.89	7.6	2.2	2.3	437
YB3-250M-2	55	100.0	2970	176	94.0	0.89	7.6	2.2	2.3	503
YB3-280S-2	75	135.3	2970	241	94.6	0.89	6.9	2.0	2.3	682
YB3-280M-2	90	161.7	2970	289	95.0	0.89	7.0	2.0	2.3	795
YB3-315S-2	110	195.5	2980	352	95.0	0.90	7.1	2.0	2.2	1202
YB3-315M-2	132	233.6	2980	423	95.4	0.90	7.1	2.0	2.2	1267
YB3-315L1-2	160	280.0	2980	512	95.4	0.91	7.1	2.0	2.2	1475
YB3-315L2-2	200	350.0	2980	640	95.4	0.91	7.1	2.0	2.2	1748
YB3-355S1-2	185	323.8	2985	592	95.4	0.91	7.1	2.0	2.2	1847
YB3-355S2-2	200	350.0	2985	640	95.4	0.91	7.1	2.0	2.2	1847
YB3-355M1-2	220	385.0	2985	703	95.4	0.91	7.1	2.0	2.2	2010
YB3-355M2-2	250	435.7	2985	799	95.8	0.91	7.1	2.0	2.2	2294
YB3-355L1-2	280	488.0	2985	895	95.8	0.91	7.1	2.0	2.2	2469
YB3-355L2-2	315	549.0	2985	1007	95.8	0.91	7.1	2.0	2.2	2535
YB3-160M-4	11	21.6	1460	71	91.0	0.85	7.5	2.2	2.3	163
YB3-160L-4	15	28.9	1460	98	91.8	0.86	7.5	2.2	2.3	183
YB3-180M-4	18.5	35.5	1470	120	92.2	0.86	7.7	2.2	2.3	240
YB3-180L-4	22	42.0	1470	142	92.6	0.86	7.8	2.2	2.3	264
YB3-200L-4	30	56.9	1480	193	93.2	0.86	7.2	2.2	2.3	366
YB3-225S-4	37	69.8	1480	238	93.6	0.86	7.3	2.2	2.3	437
YB3-225M-4	45	84.7	1480	290	93.9	0.86	7.4	2.2	2.3	453

型号 Type	额定 功率 Rated Power	额定 电流 Rated Current	额定 转速 Rated Speed	额定 转矩 Rated Torque	效率 Efficiency	功率 因数 Power Factor	堵转电流 额定电流 $\frac{I_{st}}{I_n}$	堵转转矩 额定转矩 $\frac{T_{st}}{T_n}$	最大转矩 额定转矩 $\frac{T_{max}}{T_n}$	重量 Weight
YB3-250M-4	55	103.2	1480	354	94.2	0.86	7.4	2.2	2.3	612
YB3-280S-4	75	136.7	1480	483	94.7	0.88	6.7	2.2	2.3	727
YB3-280M-4	90	163.6	1480	580	95.0	0.88	6.9	2.2	2.3	852
YB3-315S-4	110	199.1	1485	707	95.4	0.88	6.9	2.2	2.2	1257
YB3-315M-4	132	238.9	1485	848	95.4	0.88	6.9	2.2	2.2	1311
YB3-315L1-4	160	286.3	1485	1028	95.4	0.89	6.9	2.2	2.2	1442
YB3-315L2-4	200	357.9	1485	1281	95.4	0.89	6.9	2.2	2.2	1639
YB3-355S1-4	185	331.1	1490	1185	95.4	0.89	6.9	2.2	2.2	1857
YB3-355S2-4	200	357.9	1490	1281	95.4	0.89	6.9	2.2	2.2	1967
YB3-355M1-4	220	389.3	1490	1410	95.4	0.90	6.9	2.2	2.2	2119
YB3-355M2-4	250	440.6	1490	1602	95.8	0.90	6.9	2.2	2.2	2272
YB3-355L1-4	280	493.4	1490	1794	95.8	0.90	6.9	2.2	2.2	2469
YB3-355L2-4	315	555.1	1490	2018	95.8	0.90	6.9	2.2	2.2	2841
YB3-160M-6	7.5	16.4	970	73	89.0	0.78	6.7	2.1	2.1	168
YB3-160L-6	11	23.5	970	108	90.0	0.79	6.9	2.1	2.1	192
YB3-180L-6	15	30.9	970	147	91.0	0.81	7.2	2.0	2.1	245
YB3-200L1-6	18.5	37.9	970	182	91.5	0.81	7.2	2.1	2.1	316
YB3-200L2-6	22	44.3	970	216	92.0	0.82	7.3	2.1	2.1	344
YB3-225M-6	30	60.8	980	292	92.5	0.81	7.1	2.0	2.1	447
YB3-250M-6	37	72.0	980	360	93.0	0.84	7.1	2.1	2.1	573
YB3-280S-6	45	85.0	980	438	93.5	0.86	7.2	2.1	2.0	694
YB3-280M-6	55	103.6	980	535	93.8	0.86	7.2	2.1	2.0	797
YB3-315S-6	75	142.3	985	727	94.2	0.85	6.7	2.0	2.0	1180
YB3-315M-6	90	172.3	985	872	94.5	0.84	6.7	2.0	2.0	1245
YB3-315L1-6	110	207.0	985	1066	95.0	0.85	6.7	2.0	2.0	1431
YB3-315L2-6	132	245.5	985	1279	95.0	0.86	6.7	2.0	2.0	1530
YB3-355S-6	160	294.2	990	1543	95.0	0.87	6.7	2.0	2.0	1802
YB3-355M1-6	185	340.1	990	1784	95.0	0.87	6.7	2.0	2.0	1923
YB3-355M2-6	200	367.7	990	1929	95.0	0.87	6.7	2.0	2.0	2152
YB3-355L1-6	220	404.4	990	2122	95.0	0.87	6.7	2.0	2.0	2338



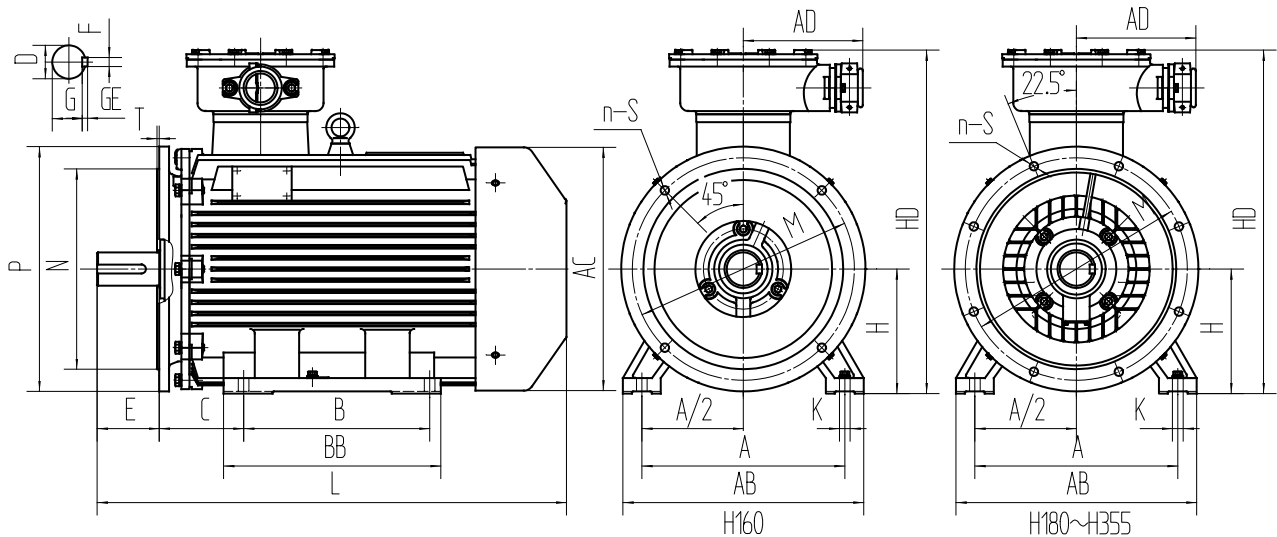
型号 Type	额定 功率 Rated Power	额定 电流 Rated Current	额定 转速 Rated Speed	额定 转矩 Rated Torque	效率 Efficiency	功率 因数 Power Factor	堵转电流 额定电流 $\frac{I_{st}}{I_n}$	堵转转矩 额定转矩 $\frac{T_{st}}{T_n}$	最大转矩 额定转矩 $\frac{T_{max}}{T_n}$	重量 Weight
YB3-355L2-6	250	459.6	990	2411	95.0	0.87	6.7	2.0	2.0	2458
YB3-160M1-8	4	10.3	720	53	81.0	0.73	6.0	1.9	2.0	144
YB3-160M2-8	5.5	13.6	720	73	83.0	0.74	6.0	1.9	2.0	158
YB3-160L-8	7.5	17.8	720	100	85.5	0.75	6.0	1.9	2.0	192
YB3-180L-8	11	25.5	730	144	87.5	0.75	6.5	2.0	2.0	245
YB3-200L-8	15	34.1	730	197	88.0	0.76	6.6	2.0	2.0	249
YB3-225S-8	18.5	41.1	730	242	90.0	0.76	6.6	1.9	2.0	409
YB3-225M-8	22	47.4	730	288	90.5	0.78	6.6	1.9	2.0	431
YB3-250M-8	30	63.4	730	393	91.0	0.79	6.5	1.9	2.0	579
YB3-280S-8	37	77.8	730	484	91.5	0.79	6.6	1.9	2.0	660
YB3-280M-8	45	94.1	730	590	92.0	0.79	6.6	1.9	2.0	765
YB3-315S-8	55	111.2	740	710	92.8	0.81	6.6	1.8	2.0	1005
YB3-315M-8	75	150.5	740	968	93.5	0.81	6.2	1.8	2.0	1202
YB3-315L1-8	90	177.8	740	1162	93.8	0.82	6.4	1.8	2.0	1224
YB3-315L2-8	110	216.8	740	1420	94.0	0.82	6.4	1.8	2.0	1420
YB3-355S-8	132	261.1	740	1704	93.7	0.82	6.4	1.8	2.0	1792
YB3-355M-8	160	314.7	740	2065	94.2	0.82	6.4	1.8	2.0	1988
YB3-355L1-8	185	363.9	740	2388	94.2	0.82	6.4	1.8	2.0	2294
YB3-355L2-8	200	387.4	740	2582	94.5	0.83	6.4	1.8	2.0	2404
YB3-315S-10	45	99.6	590	730	91.5	0.75	6.2	1.5	2.0	874
YB3-315M-10	55	121.1	590	890	92.0	0.75	6.2	1.5	2.0	1045
YB3-315L1-10	75	162.1	590	1214	92.5	0.76	5.8	1.5	2.0	1064
YB3-315L2-10	90	191.0	590	1457	93.0	0.77	5.9	1.5	2.0	1235
YB3-355S-10	90	191.0	590	1457	93.0	0.77	5.9	1.5	2.0	1558
YB3-355M1-10	110	229.9	590	1780	93.2	0.78	6.0	1.3	2.0	1729
YB3-355M2-10	132	275.0	590	2137	93.5	0.78	6.0	1.3	2.0	1995
YB3-355L1-10	160	333.3	590	2590	93.5	0.78	6.0	1.3	2.0	2090
YB3-355L2-10	185	385.4	590	2995	93.5	0.78	6.0	1.3	2.0	2147



B3机座带底脚，端盖上无凸缘的电动机外形及安装尺寸

Outline and Mounting Dimensions of B3 Motors: Frame with Mounting Surface and End Shield without Flange

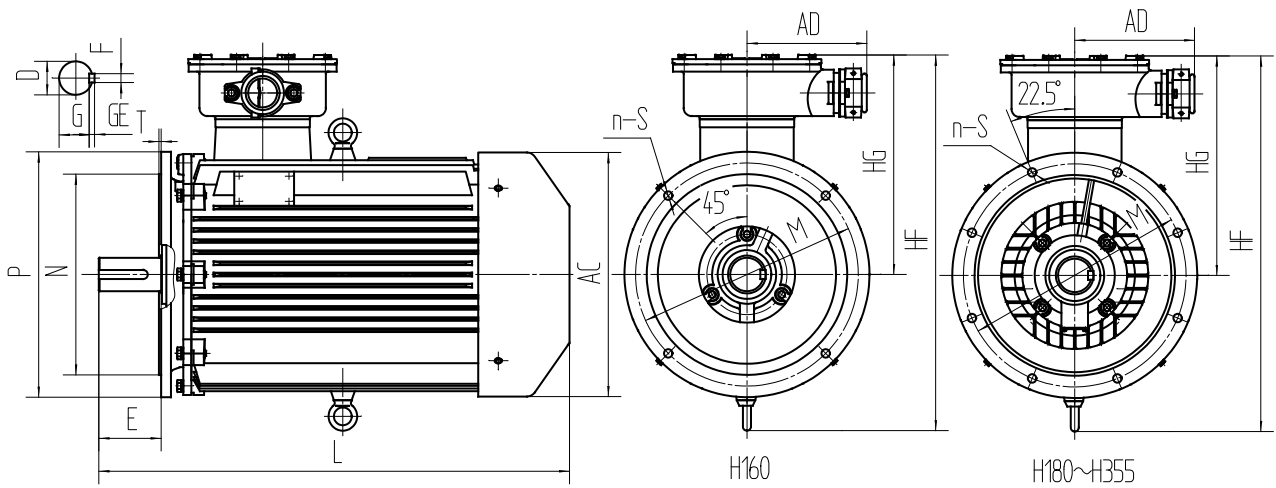
型号 Type	160M	160L	180M	180L	200L	225S	225M	250M	280S	280M	315S	315M	315L	355S	355M	355L		
安装尺寸 Mounting dimensions	H	160	160	180	180	200	225	225	250	280	280	315	315	315	355	355	355	
	A	254	254	279	279	318	356	356	406	457	457	508	508	508	610	610	610	
	A/2	127	127	139.5	139.5	159	178	178	203	228.5	228.5	254	254	254	305	305	305	
	B	210	254	241	279	305	286	311	349	368	419	406	457	508	500	560	630	
	C	108	108	121	121	133	149	149	168	190	190	216	216	216	254	254	254	
	D	2P	42	42	48	48	55	—	55	60	65	65	65	65	65	75	75	75
		4/6/8/10P						60	60	65	75	75	80	80	80	95	95	95
	E	2P	110	110	110	110	—	110	140	140	140	140	140	140	140	140	140	140
		4/6/8/10P					140	140	140	140	140	170	170	170	170	170	170	170
	F×GE	2P	12×8	12×8	14×9	14×9	16×10	—	16×10	18×11	18×11	18×11	18×11	18×11	18×11	20×12	20×12	20×12
		4/6/8/10P						18×11	18×11	18×11	20×12	20×12	22×14	22×14	22×14	25×14	25×14	25×14
	G	2P	37	37	42.5	42.5	49	—	49	53	58	58	58	58	58	67.5	67.5	67.5
		4/6/8/10P						53	53	58	67.5	67.5	71	71	71	86	86	86
	K	4-Φ14.5	4-Φ14.5	4-Φ15	4-Φ15	4-Φ18.5	4-Φ18.5	4-Φ18.5	4-Φ24	4-Φ24	4-Φ24	4-Φ24	4-Φ28	4-Φ28	4-Φ28	4-Φ28	4-Φ28	4-Φ28
外形尺寸 Outline dimensions	AB	330	330	355	360	390	435	435	490	545	545	640	640	640	740	740	740	
	BB	258	302	311	349	366	355	380	420	438	490	550	680	680	636	696	766	
	AC	325	325	360	360	400	450	450	500	560	560	630	630	630	750	750	750	
	AD	220	220	220	220	250	250	250	300	300	300	400	400	400	500	500	500	
	HD	520	520	550	550	645	690	690	730	810	810	1020	1020	1020	1080	1080	1080	
	L	2P	670	710	730	750	805	—	860	945	1010	1060	1320	1350	1490	1570	1650	1750
4/6/8P		670	710	730	750	805	865	890	945	1010	1060	1350	1380	1520	1570	1650	1750	
型号 Type	160M	160L	180M	180L	200L	225S	225M	250M	280S	280M	315S	315M	315L	355S	355M	355L		



B35机座带底脚，端盖上有凸缘（带通孔）的电动机外形及安装尺寸

Outline and Mounting Dimensions of B35 Motors: Frame with Mounting Surface and End Shield with Flange (with Through-hole)

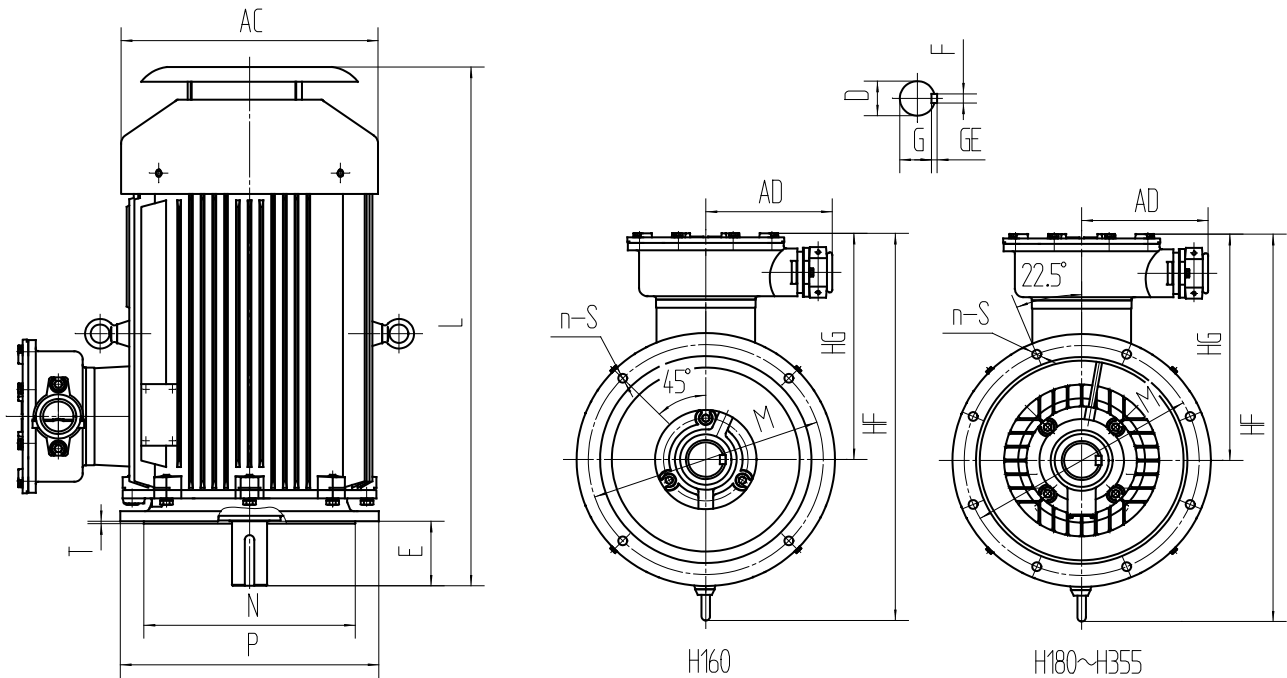
型号 Type		160M	160L	180M	180L	200L	225S	225M	250M	280S	280M	315S	315M	315L	355S	355M	355L	
安装尺寸 Mounting dimensions	H	160	160	180	180	200	225	225	250	280	280	315	315	315	355	355	355	
	A	254	254	279	279	318	356	356	406	457	457	508	508	508	610	610	610	
	A/2	127	127	139.5	139.5	159	178	178	203	228.5	228.5	254	254	254	305	305	305	
	B	210	254	241	279	305	286	311	349	368	419	406	457	508	500	560	630	
	C	108	108	121	121	133	149	149	168	190	190	216	216	216	254	254	254	
	D	2P	42	42	48	48	55	—	55	60	65	65	65	65	65	75	75	75
		4/6/8P	60	60	65	65	75	60	60	65	75	75	80	80	80	95	95	95
	E	2P	110	110	110	110	110	—	110	140	140	140	140	140	140	140	140	140
		4/6/8P	140	140	140	140	140	140	140	140	140	140	170	170	170	170	170	170
	F×GD	2P	12×8	12×8	14×9	14×9	16×10	—	16×10	18×11	18×11	18×11	18×11	18×11	18×11	20×12	20×12	20×12
		4/6/8P	18×11	18×11	18×11	20×12	20×12	18×11	18×11	18×11	20×12	20×12	22×14	22×14	22×14	25×14	25×14	25×14
	G	2P	37	37	42.5	42.5	49	—	49	53	58	58	58	58	58	67.5	67.5	67.5
		4/6/8P	53	53	58	58	67.5	53	53	58	67.5	67.5	71	71	71	86	86	86
	K	4-Φ15	4-Φ15	4-Φ15	4-Φ15	4-Φ19	4-Φ19	4-Φ19	4-Φ19	4-Φ24	4-Φ24	4-Φ24	4-Φ28	4-Φ28	4-Φ28	4-Φ28	4-Φ28	4-Φ28
	M	300	300	300	300	350	400	400	500	500	500	500	600	600	600	740	740	740
N	250	250	250	250	300	350	350	450	450	450	450	550	550	550	680	680	680	
P	350	350	350	350	400	450	450	550	550	550	550	660	660	660	800	800	800	
n-S	4-Φ18.5	4-Φ18.5	4-Φ18.5	4-Φ18.5	4-Φ18.5	8-Φ18.5	8-Φ18.5	8-Φ19	8-Φ24	8-Φ24	8-Φ24	8-Φ24	8-Φ24	8-Φ24	8-Φ24	8-Φ24	8-Φ24	
T	5	5	5	5	5	5	5	5	5	5	5	6	6	6	6	6	6	
外形尺寸 Outline dimensions	AB	330	330	355	355	390	435	435	490	545	545	640	640	640	740	740	740	
	BB	270	314	311	349	366	355	380	420	438	490	550	680	680	636	696	766	
	AC	325	325	360	360	400	450	450	500	565	565	630	630	630	750	750	750	
	AD	220	220	220	220	250	250	250	300	300	300	400	400	400	500	500	500	
	HD	520	520	550	550	645	690	690	730	810	810	1020	1020	1020	1080	1080	1080	
	L	2P	670	710	730	750	805	—	860	945	1010	1060	1320	1350	1490	1570	1650	1750
4/6/8P		670	710	730	750	805	865	890	945	1010	1060	1350	1380	1520	1570	1650	1750	
型号 Type		160M	160L	180M	180L	200L	225S	225M	250M	280S	280M	315S	315M	315L	355S	355M	355L	



B5 机座不带底脚，端盖上有凸缘（带通孔）的电动机外形及安装尺寸

Outline and Mounting Dimensions of B5 and V3 Motors: Frame without Mounting Surface and End Shield with Flange (with Through-hole)

型号 Type		160M	160L	180M	180L	200L	225S	225M	250M	280S	280M	
安装 尺寸 Mounting dimensions	D	2P	42	42	48	48	55	—	55	60	65	65
		4/6/8P	—	—	—	—	—	60	60	65	75	75
	E	2P	110	110	110	110	110	—	110	140	140	140
		4/6/8P	—	—	—	—	—	140	140	140	140	140
	F × GE	2P	12 × 8	12 × 8	14 × 9	14 × 9	16 × 10	—	16 × 10	18 × 11	18 × 11	18 × 11
		4/6/8P	—	—	—	—	—	18 × 11	18 × 11	18 × 11	20 × 12	20 × 12
	G	2P	37	37	42.5	42.5	49	—	49	53	58	58
		4/6/8P	—	—	—	—	—	53	53	58	67.5	67.5
	M	300	300	300	300	350	400	400	500	500	500	
	N	250	250	250	250	300	350	350	450	450	450	
P	350	350	350	350	450	450	550	550	550	550		
n-S	4-Φ18.5	4-Φ18.5	4-Φ18.5	4-Φ18.5	4-Φ18.5	8-Φ18.5	8-Φ18.5	8-Φ18.5	8-Φ18.5	8-Φ18.5	8-Φ18.5	
T	5	5	5	5	5	5	5	5	5	5		
外形 尺寸 Outline dimensions	AC	325	325	360	360	400	450	450	500	560	560	
	AD	220	220	220	220	250	250	250	300	300	300	
	HG	360	360	370	370	445	465	465	500	550	550	
	HF	570	570	600	600	700	750	750	800	900	900	
	L	2P	670	710	730	750	805	—	860	945	1010	1060
4/6/8P		670	710	730	750	805	865	890	945	1010	1060	
型号 Type		160M	160L	180M	180L	200L	225S	225M	250M	280S	280M	



V1 立式安装，机座不带底脚，端盖上有凸缘（带通孔），轴伸向下的电动机外形及安装尺寸

Outline and Mounting Dimensions of V1 Motors: Vertical Shaft, Frame without Mounting Surface, End Shield with Flange (with Through-hole), Driving End Downward

型号 Type		160M	160L	180M	180L	200L	225S	225M	250M	280S	280M	315S	315M	315L	355S	355M	355L	
安装尺寸 Mounting dimensions	D	2P	42	42	48	48	55	—	55	60	65	65	65	65	75	75	75	
		4/6/8P	42	42	48	48	55	60	60	65	75	75	80	80	80	95	95	95
	E	2P	110	110	110	110	110	—	110	140	140	140	140	140	140	140	140	140
		4/6/8P	110	110	110	110	110	140	140	140	140	140	170	170	170	170	170	170
	F× GD	2P	12×8	12×8	14×9	14×9	16×10	—	16×10	18×11	18×11	18×11	18×11	18×11	18×11	20×12	20×12	20×12
		4/6/8P	12×8	12×8	14×9	14×9	16×10	18×11	18×11	18×11	20×12	20×12	22×14	22×14	22×14	25×14	25×14	25×14
	G	2P	37	37	42.5	42.5	49	—	49	53	58	58	58	58	58	67.5	67.5	67.5
		4/6/8P	37	37	42.5	42.5	49	53	53	58	67.5	67.5	71	71	71	86	86	86
	M	300	300	300	300	300	350	400	400	500	500	600	600	600	740	740	740	
	N	250	250	250	250	250	300	350	350	450	450	550	550	550	680	680	680	
P	350	350	350	350	350	450	450	550	550	550	660	660	660	800	800	800		
n-S	4-Φ18.5	4-Φ18.5	4-Φ18.5	4-Φ18.5	4-Φ18.5	8-Φ18.5	8-Φ18.5	8-Φ18.5	8-Φ18.5	8-Φ18.5	8-Φ18.5	8-Φ24	8-Φ24	8-Φ24	8-Φ24	8-Φ24	8-Φ24	
T	5	5	5	5	5	5	5	5	5	5	5	6	6	6	6	6	6	
外形尺寸 Outline dimensions	AC	325	325	360	360	400	450	450	500	560	560	630	630	630	750	750	750	
	AD	220	220	220	220	250	250	250	300	300	300	400	400	400	500	500	500	
	HG	360	360	370	370	445	465	465	500	550	550	705	705	705	725	725	725	
	HF	570	570	600	600	700	750	750	800	900	900	1080	1080	1080	1155	1155	1155	
	L	2P	770	800	831	851	890	—	958	1035	1077	1142	1340	1420	1510	1600	1600	1780
4/6/8P		770	800	831	851	890	958	988	1035	1077	1142	1370	1450	1540	1600	1600	1780	
型号 Type		160M	160L	180M	180L	200L	225S	225M	250M	280S	280M	315S	315M	315L	355S	355M	355L	